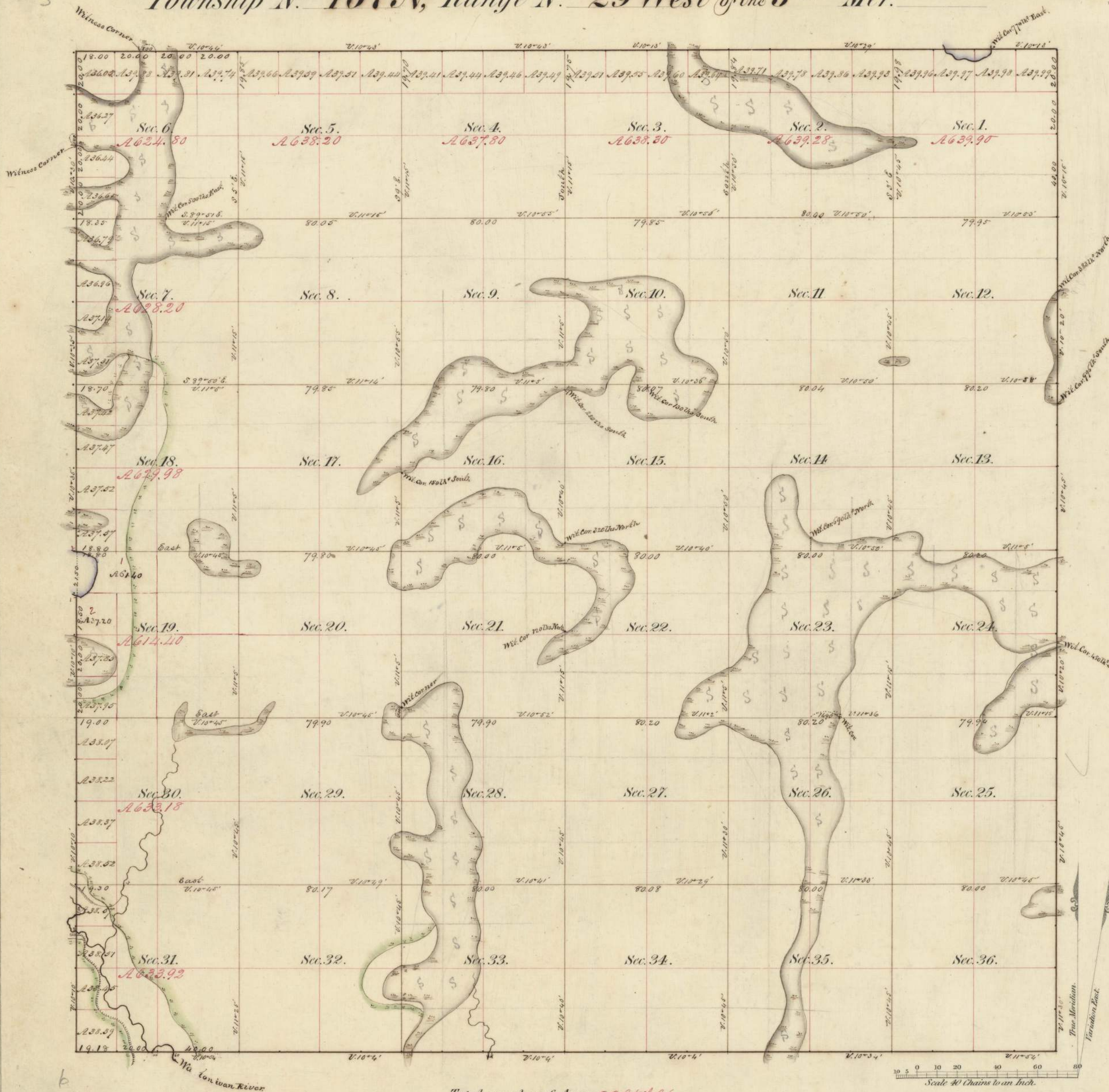


Township N^o 107 N, Range N^o 29 West of the 5th Mer.



Meanders of Lake

Posts	Courses	Ch. Lk.	Posts	Courses	Ch. Lk.	Posts	Courses	Ch. Lk.
1	N. 65° E	2.00						
	N. 57° E	4.50						
	N. 35° E	4.00						
	N. 18° E	6.50						
	North	5.00						
	N. 32° W	2.50						
	N. 64° W	6.00						
2	N. 83° W	3.29						
Total		Ms	Chs	Lks				
			33.79					

Total number of Acres *22957.96*

Surveys Designated.	By Whom Surveyed	Date of Contract.	Amount of Surveys M. Ch. Lk.	When Surveyed.	When Changed in the Sur. Genl. Ac.
Township lines.	John Ball	June 20th 1852	23.77.18	July & Aug. 1854	
Subdivisions.	John Quigley	July 10th 1854	60.27.26	September 1854	

The above Map of Township N^o 107 N of Range N^o 29 West of the 5th Principal Meridian Minnesota is strictly conformable to the field notes of the survey thereof on file in this Office which have been examined and approved.

Surveyor General's Office }
 Dubuque March 15, 1855. } *Warner Secor*
 Sur. Genl.