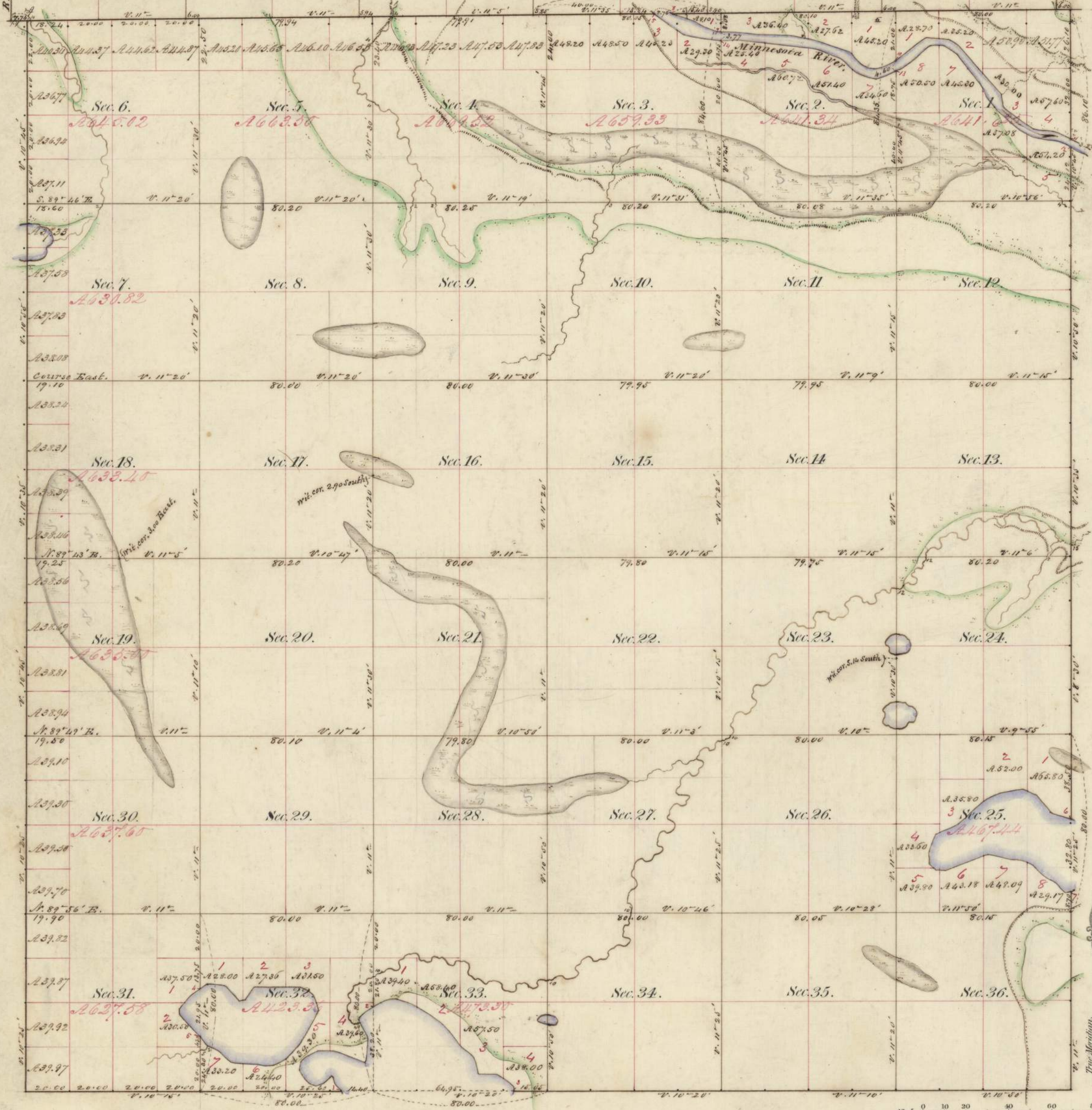


Township N<sup>o</sup> 108, N. Range N<sup>o</sup> 28 West, 5<sup>th</sup> Mer.



Meanders of Lakes & Minnesota River					
Posts	Courses	Ch. Lk.	Posts	Courses	Ch. Lk.
Part of Lake in Sec. 32 beginning on the South boundary on the West side of Lake			Lake in Section 25, beginning on Range line on North side of Lake		
1	A. 42 <sup>th</sup>	5.50	C	A. 71 <sup>th</sup>	10.00
	A. 21 <sup>th</sup>	2.00		A. 40 <sup>th</sup>	11.00
	A. 25 <sup>th</sup>	1.00		A. 67 <sup>th</sup>	7.00
	A. 40 <sup>th</sup>	3.50		P. 80 <sup>th</sup>	10.00
	P. 64 <sup>th</sup>	4.00		P. 63 <sup>th</sup>	8.00
	A. 42 <sup>th</sup>	5.50		P. 50 <sup>th</sup>	15.00
	A. 17 <sup>th</sup>	2.00		P. 65 <sup>th</sup>	11.00
	A. 6 <sup>th</sup>	2.50		P. 22 <sup>th</sup>	9.00
	A. 27 <sup>th</sup>	2.50		South	5.00
	A. 52 <sup>th</sup>	2.00		P. 52 <sup>th</sup>	5.00
	A. 64 <sup>th</sup>	6.50		East	5.00
	P. 57 <sup>th</sup>	8.00		A. 70 <sup>th</sup>	19.00
	P. 64 <sup>th</sup>	14.00		P. 77 <sup>th</sup>	10.00
	A. 70 <sup>th</sup>	50		P. 83 <sup>th</sup>	7.00
	A. 5 <sup>th</sup>	9.00		P. 64 <sup>th</sup>	5.00
	A. 12 <sup>th</sup>	3.00		P. 47 <sup>th</sup>	8.50
	A. 29 <sup>th</sup>	7.50		P. 61 <sup>th</sup>	4.00
	A. 34 <sup>th</sup>	3.00		P. 44 <sup>th</sup>	7.00
	A. 54 <sup>th</sup>	4.00		A. 78 <sup>th</sup>	2.56
	A. 64 <sup>th</sup>	5.00	Minnesota River		
	East	3.00	Left bank downstr.		
	P. 72 <sup>th</sup>	5.00	5	A. 75 <sup>th</sup>	9.00
	P. 61 <sup>th</sup>	5.00		P. 55 <sup>th</sup>	4.25
	P. 52 <sup>th</sup>	12.00	9	P. 70 <sup>th</sup>	9.77
	P. 40 <sup>th</sup>	12.00		East	7.00
	P. 52 <sup>th</sup>	5.00		P. 46 <sup>th</sup>	14.00
	P. 29 <sup>th</sup>	4.00		East	7.00
	P. 10 <sup>th</sup>	3.00		P. 46 <sup>th</sup>	14.00
	East	5.50		P. 58 <sup>th</sup>	10.00
	P. 55 <sup>th</sup>	10.00		P. 79 <sup>th</sup>	15.00
	P. 5 <sup>th</sup>	2.00		P. 70 <sup>th</sup>	14.00
				P. 46 <sup>th</sup>	7.00
				P. 62 <sup>th</sup>	4.50
				P. 77 <sup>th</sup>	3.50
				A. 75 <sup>th</sup>	6.50
			10	A. 55 <sup>th</sup>	2.55
Lake in Section 31 beginning at Mr. Post on line below Sec. 31 & 32 on North side of Lake			Right bank upstream		
4	A. 57 <sup>th</sup>	4.00		A. 52 <sup>th</sup>	17.00
	P. 83 <sup>th</sup>	9.00		P. 84 <sup>th</sup>	10.00
	P. 40 <sup>th</sup>	7.00		P. 57 <sup>th</sup>	9.00
	A. 74 <sup>th</sup>	3.00		P. 42 <sup>th</sup>	25.00
	A. 14 <sup>th</sup>	7.00		P. 10 <sup>th</sup>	6.50
	East	22.00		P. 53 <sup>th</sup>	14.00
	P. 74 <sup>th</sup>	2.50		P. 55 <sup>th</sup>	3.50
	P. 29 <sup>th</sup>	4.50		P. 23 <sup>th</sup>	9.57
	P. 19 <sup>th</sup>	7.50	11	A. 66 <sup>th</sup>	7.82
	P. 23 <sup>th</sup>	4.00			
	P. 31 <sup>th</sup>	13.00			
	P. 44 <sup>th</sup>	10.00			
	P. 62 <sup>th</sup>	6.50	12	A. 65 <sup>th</sup>	6.50
	East	5.00		A. 36 <sup>th</sup>	5.00
	A. 74 <sup>th</sup>	2.00		A. 79 <sup>th</sup>	5.00
	A. 86 <sup>th</sup>	13.00		A. 62 <sup>th</sup>	7.00
	A. 50 <sup>th</sup>	5.00		A. 57 <sup>th</sup>	11.00
	A. 44 <sup>th</sup>	2.50		A. 45 <sup>th</sup>	7.50
	A. 66 <sup>th</sup>	7.00		A. 36 <sup>th</sup>	6.00
5	A. 34 <sup>th</sup>	4.81		A. 23 <sup>th</sup>	5.00
				A. 35 <sup>th</sup>	15.00
	A. 43 <sup>th</sup>	14.00		A. 57 <sup>th</sup>	8.90
	North	3.00		East	6.00
	A. 53 <sup>th</sup>	9.00		P. 50 <sup>th</sup>	10.00

Total number of Acres 22598.46

Surveys Designated.	By Whom Surveyed	Date of Contract.	Amount of Surveys M. Ch. Lk.	When Surveyed.	When Changed in the Sur. Gen. Acc't
Township lines.	John Ball	June 20 <sup>th</sup> 1854	24, 06, 34	July & Sept. 1854	
Subdivisions.	John Quigley	July 10 <sup>th</sup> 1854	71, 14, 64	September 1854	

The above Map of Township N. 108 North, of Range N. 28 West, of the 5<sup>th</sup> Principal Meridian Minnesota is strictly conformable to the field notes of the survey thereof on file in this Office which have been examined and approved.

Surveyor General's Office  
Dubuque, March 15, 1855

Warner Lewis  
Sur. Gen.