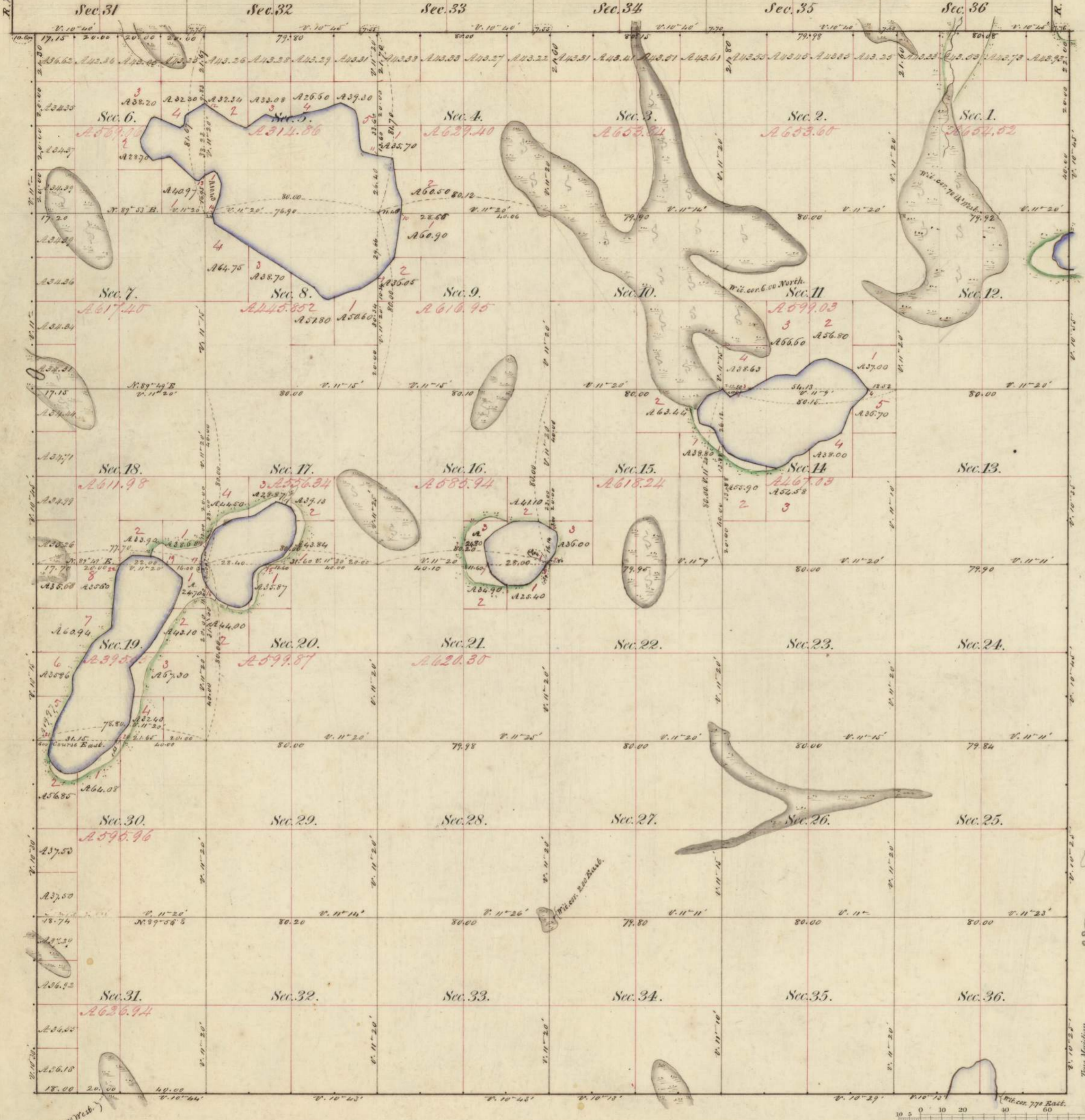


Township N<sup>o</sup> 108. N. Range N<sup>o</sup> 29 West, 5<sup>th</sup> Mer.



Meanders of Lakes.								
Posts	Courses	Ch. & Lk.	Posts	Courses	Ch. & Lk.	Posts	Courses	Ch. & Lk.
Lake in Sec. 11, 14 & 15.				North	7.00	A. 30 <sup>th</sup> 6.	1.50	
				A. 25 <sup>th</sup> 7.	5.00	A. 20 <sup>th</sup> 6.	3.00	
1	A. 5 <sup>th</sup> 7.	1.50	11	A. 5 <sup>th</sup> 7.	7.05	A. 36 <sup>th</sup> 6.	6.00	
	A. 19 <sup>th</sup> 7.	7.00		A. 8 <sup>th</sup> 7.	14.00	A. 60 <sup>th</sup> 6.	7.00	
	A. 48 <sup>th</sup> 7.	3.50		A. 7 <sup>th</sup> 7.	7.00	A. 79 <sup>th</sup> 6.	12.00	
	A. 72 <sup>th</sup> 7.	5.00		A. 7 <sup>th</sup> 7.	7.00	A. 60 <sup>th</sup> 6.	11.00	
	A. 11 <sup>th</sup> 7.	6.00		A. 22 <sup>th</sup> 7.	2.00	A. 74 <sup>th</sup> 6.	7.50	
	A. 35 <sup>th</sup> 6.	8.00		A. 5 <sup>th</sup> 7.	11.00	A. 31 <sup>th</sup> 6.	4.00	
2	A. 7 <sup>th</sup> 6.	7.70		A. 13 <sup>th</sup> 7.	7.00	A. 7 <sup>th</sup> 6.	6.00	
				A. 65 <sup>th</sup> 7.	7.00	A. 17 <sup>th</sup> 7.	5.00	
	A. 4 <sup>th</sup> 6.	4.00		A. 69 <sup>th</sup> 7.	7.00	A. 36 <sup>th</sup> 7.	12.00	
	A. 70 <sup>th</sup> 6.	4.00		A. 77 <sup>th</sup> 7.	22.00	15	A. 69 <sup>th</sup> 7.	5.25
3	A. 77 <sup>th</sup> 6.	7.10		A. 73 <sup>th</sup> 7.	8.00			
				A. 55 <sup>th</sup> 7.	11.00	Lake beginning at Post betw Sec. 15 & 19 on North side of Lake.		
	A. 60 <sup>th</sup> 6.	12.50		A. 65 <sup>th</sup> 7.	10.00			
	East	11.00	12	A. 56 <sup>th</sup> 7.	12.24			
	A. 48 <sup>th</sup> 6.	9.50		A. 60 <sup>th</sup> 7.	10.00			
	A. 75 <sup>th</sup> 6.	5.00		A. 12 <sup>th</sup> 7.	5.00	19	A. 30 <sup>th</sup> 6.	9.00
	A. 68 <sup>th</sup> 6.	14.00		A. 66 <sup>th</sup> 7.	2.00		South	6.00
11	A. 4 <sup>th</sup> 6.	11.20		A. 68 <sup>th</sup> 7.	12.00		A. 24 <sup>th</sup> 7.	10.00
				A. 65 <sup>th</sup> 7.	2.50		A. 34 <sup>th</sup> 7.	21.00
	South	1.00		A. 23 <sup>th</sup> 7.	9.00		A. 43 <sup>th</sup> 7.	14.00
	A. 5 <sup>th</sup> 7.	11.00		South	1.00		A. 17 <sup>th</sup> 6.	10.00
	A. 23 <sup>th</sup> 7.	12.00		A. 24 <sup>th</sup> 6.	5.00		A. 10 <sup>th</sup> 7.	16.00
	A. 9 <sup>th</sup> 7.	7.00		A. 48 <sup>th</sup> 6.	5.00	20	A. 39 <sup>th</sup> 7.	9.10
	A. 75 <sup>th</sup> 7.	4.00		A. 81 <sup>th</sup> 6.	8.00			
	A. 56 <sup>th</sup> 7.	10.00		A. 48 <sup>th</sup> 6.	16.00		A. 29 <sup>th</sup> 7.	2.50
	A. 74 <sup>th</sup> 7.	5.00		A. 50 <sup>th</sup> 6.	1.50		A. 51 <sup>th</sup> 7.	9.00
	A. 41 <sup>th</sup> 7.	4.00	13	A. 42 <sup>th</sup> 6.	3.22		A. 7 <sup>th</sup> 7.	6.00
	A. 65 <sup>th</sup> 7.	5.00		A. 66 <sup>th</sup> 6.	5.00		A. 66 <sup>th</sup> 7.	7.00
	A. 75 <sup>th</sup> 7.	20.00		A. 44 <sup>th</sup> 6.	2.00		West	5.00
	A. 56 <sup>th</sup> 7.	10.00		A. 44 <sup>th</sup> 6.	2.00		A. 60 <sup>th</sup> 7.	4.00
	A. 74 <sup>th</sup> 7.	5.00		A. 21 <sup>th</sup> 6.	4.00		A. 43 <sup>th</sup> 7.	6.00
	A. 41 <sup>th</sup> 7.	4.00		A. 10 <sup>th</sup> 7.	5.00		A. 17 <sup>th</sup> 7.	3.00
1	A. 23 <sup>th</sup> 7.	19.4	14	A. 21 <sup>th</sup> 7.	9.52	21	A. 16 <sup>th</sup> 6.	5.95
Lake in Sec. 15, 18 & 21.								
	beginning at Post on line betw Sec. 15 & 21 on the South side of Lake.			A. 12 <sup>th</sup> 6.	4.50		A. 16 <sup>th</sup> 6.	7.00
				A. 53 <sup>th</sup> 6.	52.00		A. 30 <sup>th</sup> 7.	18.00
				A. 41 <sup>th</sup> 6.	9.00		South	7.00
				A. 65 <sup>th</sup> 6.	3.00		A. 29 <sup>th</sup> 6.	15.00
5	A. 31 <sup>th</sup> 6.	5.00		A. 70 <sup>th</sup> 6.	3.30		A. 14 <sup>th</sup> 6.	10.00
	A. 8 <sup>th</sup> 6.	6.00		A. 73 <sup>th</sup> 6.	11.00		A. 5 <sup>th</sup> 6.	24.00
	A. 9 <sup>th</sup> 7.	4.50	9	A. 59 <sup>th</sup> 6.	9.17	22	A. 21 <sup>th</sup> 6.	5.25
6	A. 62 <sup>th</sup> 7.	3.20						
Lake in Sec. 17, 18 & 20.								
	beginning at Post on line betw Sec. 17 & 20 on the East side of Lake.			A. 16 <sup>th</sup> 7.	6.00		East	5.00
				West	12.00		A. 7 <sup>th</sup> 6.	6.00
				A. 63 <sup>th</sup> 7.	10.00	19	A. 52 <sup>th</sup> 6.	3.20
				A. 7 <sup>th</sup> 7.	5.00			
				A. 8 <sup>th</sup> 7.	2.50	15	A. 70 <sup>th</sup> 7.	3.00
7	A. 13 <sup>th</sup> 6.	9.17		A. 36 <sup>th</sup> 7.	3.00	Total	18.	26.
				A. 28 <sup>th</sup> 7.	2.00		Chs.	16.
				South	11.00		Lks.	
				A. 49 <sup>th</sup> 7.	7.50			
				A. 76 <sup>th</sup> 6.	4.00			
				East	6.00			
				A. 66 <sup>th</sup> 6.	5.00			
				A. 46 <sup>th</sup> 6.	3.50			
8	A. 29 <sup>th</sup> 6.	6.62	16	A. 27 <sup>th</sup> 7.	2.77			
5	A. 20 <sup>th</sup> 6.	1.00		A. 29 <sup>th</sup> 7.	3.00			
				A. 8 <sup>th</sup> 7.	2.50			
Lake in Sec. 25 & 29.				17	A. 2 <sup>th</sup> 7.	3.47		
	beginning at Post on line betw Sections 25 & 29.			North	3.50			
				A. 25 <sup>th</sup> 6.	1.00			
9	A. 44 <sup>th</sup> 6.	11.50	18	A. 32 <sup>th</sup> 6.	3.03			
10	A. 10 <sup>th</sup> 6.	21.25						

Total number of Acres 21673.66

Surveys Designated.	By Whom Surveyed	Date of Contract.	Amount of Surveys M. Ch. Lk.	When Surveyed.	When Changed in the Sur. Gen. Acc.
Township lines.	John Ball	June 20 <sup>th</sup> 1854	22, 78, 46	Aug. & Sept. 1854	
Subdivisions.	John Quigley	July 10 <sup>th</sup> 1854	68, 33, 26	October 1854	

The above Map of Township N. 108 North, of Range N. 29 West, of the 5<sup>th</sup> Principal Meridian Minnesota is strictly conformable to the field notes of the survey thereof on file in this Office which have been examined and approved.

Surveyor General's Office  
 Dubuque, March 15, 1855

Warner Lewis  
 Sur. Gen.