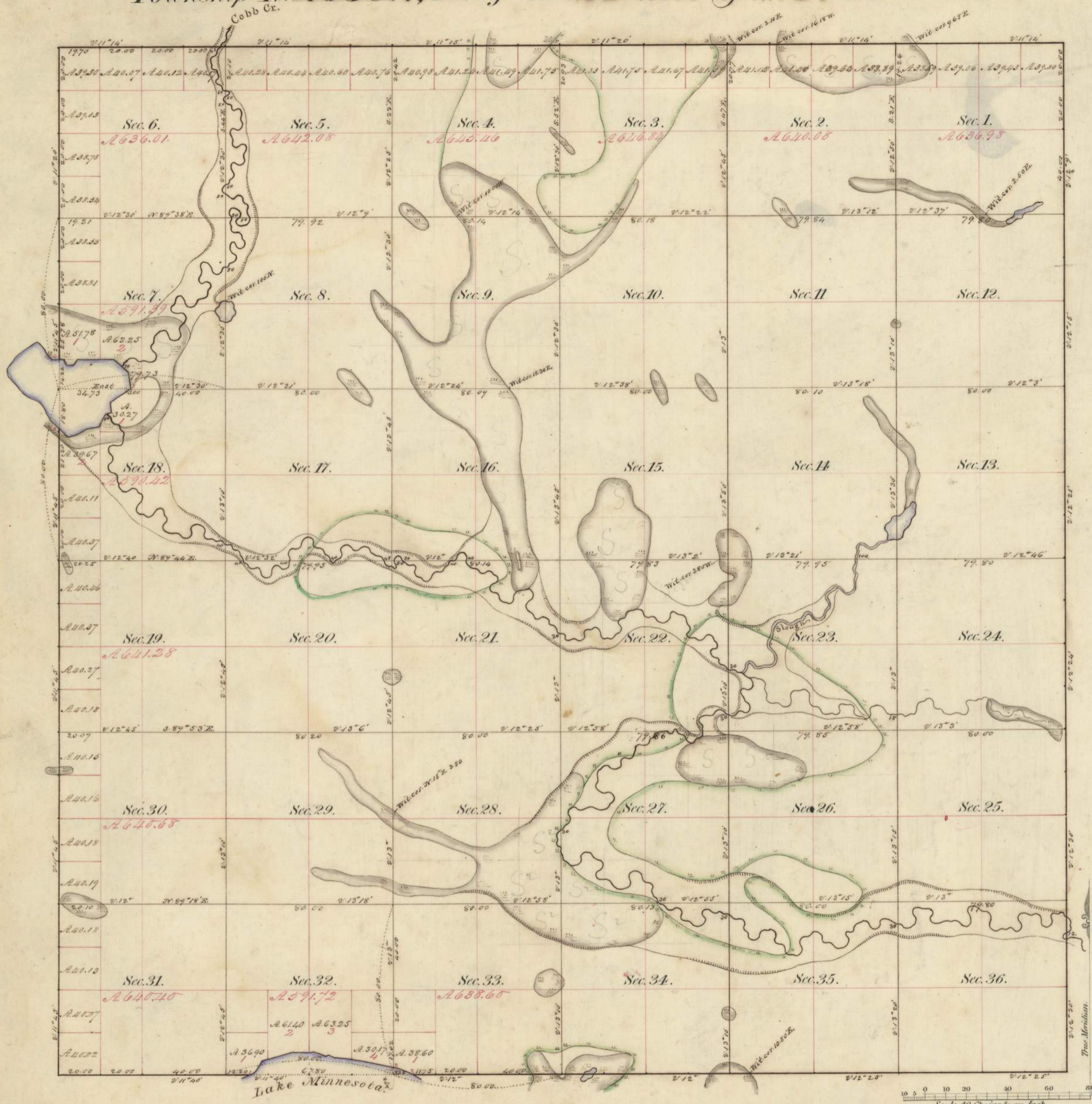


Township N<sup>o</sup> 105 N., Range N<sup>o</sup> 25 West of the 5<sup>th</sup> Mer.



Meanders of lakes.						
Posts	Courses	Ch. Lk.	Posts	Courses	Ch. Lk.	Posts
Lake Minnesota.						
1	N 63 <sup>1</sup> / <sub>2</sub> ° E	2.00				
	N 35° E	7.00				
	N 76° E	15.00				
	East	10.00				
	S 65° E	4.00				
	N 70° E	2.00				
	S 66 <sup>1</sup> / <sub>2</sub> ° E	4.00				
	S 36° E	8.00				
	S 51° E	16.00				
2	S 77 <sup>1</sup> / <sub>2</sub> ° E	4.80				
	S 74 <sup>1</sup> / <sub>2</sub> ° E	3.79				
3	S 66 <sup>1</sup> / <sub>2</sub> ° E	5.00				
Lake in Sec <sup>s</sup> 7, 8, 18						
4	S 89° E	1.97				
	S 26° E	3.00				
	S 89° E	3.50				
	N 40° E	3.50				
	East	16.50				
	S 19° E	10.00				
5	S 10° E	8.00				
	S 55° W	11.00				
	S 8° E	5.00				
	S 72° W	4.00				
	S 26° W	6.50				
	S 80° W	5.00				
	S 62° W	5.50				
	S 78° W	5.00				
6	N 51 <sup>3</sup> / <sub>4</sub> ° W	6.75				
	N 5° E	1.85				
	N 15° E	81				
Total						

Total number of Acres 22901.94

S. W. & N. E.	Surveys Designated.	By Whom Surveyed	Date of Contract.	Amount of Surveys	When Surveyed.	When Changed in
				M. Ch. Lk.		the Sur. Gen <sup>l</sup> . Ac!
	Township lines.	John Bald	June 20 <sup>th</sup> 1854	17. 79. 70	July, 1854	
		E. L. Norris	June 2 <sup>nd</sup> 1853	6. 00. 00	October, 1853	
	Subdivisions.	John J. Everett	Sept. 26 <sup>th</sup> 1854	61. 59. 52	September, 1854	

The above Map of Township N<sup>o</sup> 105 N., of Range N<sup>o</sup> 25 West, 5<sup>th</sup> Principal Meridian, Minnesota, is strictly conformable to the field notes of the survey thereof on file in this Office which have been examined and approved.

Surveyor General's Office  
 Dubuque, April 10<sup>th</sup> 1855

Warner Lewis  
 Sur. Gen<sup>l</sup>.